



**LIZ MURPHY**  
**IN CONTRAST**



## BIO

**Liz Murphy** is an abstract expressionist painter based in Montclair, New Jersey, just outside New York City. Born and raised in Surrey, England, she studied Graphic Design at Kingston University and went on to build a successful creative career in both London and New York.

Murphy previously founded and ran an interior design firm, an experience that continues to inform her approach to painting. She is deeply interested in how art lives within a space, creating work that carries a distinct energy to support and enhance the function of its environment.

Her paintings are known for their sophisticated use of color, layered surfaces, and strong compositional sensibility. Balancing intuition with structure, her process involves building, disrupting, and refining, allowing each piece to evolve into a resolved and dynamic whole.

Murphy's work is held in private collections internationally and has been exhibited in New York and beyond. In addition to her studio practice, she is a respected mentor and teacher, guiding artists in developing their own visual language through a focus on color, contrast, and composition.

## ARTIST STATEMENT

**In Contrast** explores contrast as a lived experience rather than a problem to resolve.

Rather than opposing forces canceling one another out, the paintings hold them in relationship. Intuition and structure, chaos and order, softness and strength, restraint and release coexist within the same space. The tension between them becomes generative, allowing each element to define and elevate the other.

The work is developed through a process of layering, disruption, and refinement. I begin instinctively, allowing movement, color, and form to emerge freely. Over time, a more discerning eye takes over, editing, adjusting, and rebalancing until a sense of cohesion is reached. What remains is not a fixed narrative, but a felt presence.

My background in design informs this process. Structure provides a framework that allows for greater freedom, while intuition keeps the work alive and responsive. The goal is not resolution in the traditional sense, but a state of equilibrium where complexity can exist without being simplified.

In **In Contrast**, each painting becomes a space where opposing qualities are not only accepted, but necessary. Together, they reflect a more honest experience of being human, layered, evolving, and held in tension.



**1. Dancing Along The Edge**

\$3,800

January 2026  
Acrylic on canvas  
48 x 36 x 3 in

**DESCRIPTION:**

A balance between control and release, where movement stays just within reach of collapse. Dancing Along The Edge holds that tension, where energy builds and boundaries remain fluid.



**2. The Edge Of Darkness**

\$6,000

February 2026  
Acrylic on canvas  
60 x 48 x 1.5 in

**DESCRIPTION:**

Where light holds its ground just before it gives way.  
Color presses forward.  
Shadow gathers.  
The Edge Of Darkness lives in that threshold - where tension sharpens, and something unseen begins to emerge.



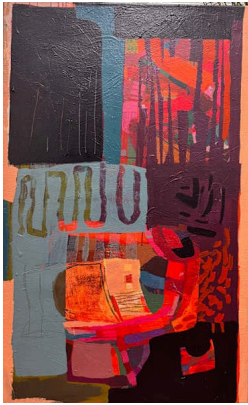
**3. Maroon Magic**

\$3,800

January 2026  
Acrylic on canvas  
48 x 36 x 3 in

**DESCRIPTION:**

Depth over brightness, restraint over excess. Maroon Magic draws its power from what is held back as much as what is revealed, where richness gathers and subtle shifts carry the weight.



**4. The Heat Behind The Calm**

\$3,200

January 2026  
Acrylic on canvas  
48 x 30 x 3 in

**DESCRIPTION:**

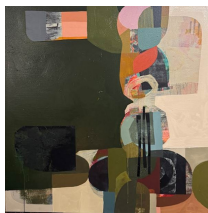
A composed surface holds steady while something more urgent builds beneath. The Heat Behind The Calm explores the tension between what is contained and what is waiting to break through.



**5. Meaningful Chatter**

\$3,300

January 2026  
Acrylic on canvas  
48 x 30 x 2 in



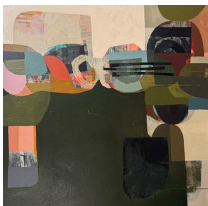
**6. Stacked Within**

\$4,500

March 2026  
Acrylic on Canvas  
48 x 48 x 2 in

**DESCRIPTION:**

Built through contrast, where light meets dark and solid meets open. Layers settle into place, creating depth through both presence and absence.





**7. Splintered Truth**

March 2026  
Acrylic on canvas  
55 x 40 x 1.5 in

\$3,800

**DESCRIPTION:**

Fragments surface and recede, never forming a single, fixed narrative. Splintered Truth holds multiple realities at once, where clarity is partial and meaning shifts depending on where you stand.



**8. Spaces Seen In Green Triptych 1,2 & 3**

March 2026  
Acrylic on Canvas  
14 x 14 in

\$1,800

**DESCRIPTION:**

A study in contrast through repetition and variation, where each panel shifts the balance between light and dark, density and openness. Together, they explore how space is defined not by what is fixed, but by what changes in relation.



**9. Blue Interrupted 1-6**

April 2026  
Acrylic On watercolor board  
20 x 20 x 1.5 in

\$2,500

**DESCRIPTION:**

Blue establishes a field of continuity, interrupted by moments of contrast that shift the rhythm and redirect the eye. Each intervention disrupts the expected, revealing how contrast activates and reshapes the whole.





**10. The Same But Different**

April 2026  
Acrylic on canvas  
40 x 40 x 2 in

\$3,500



**DESCRIPTION:**

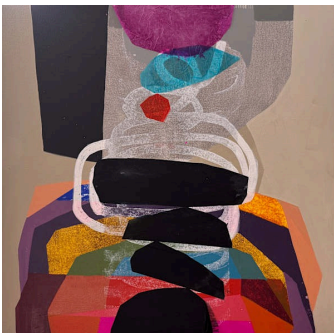
Opposing forces move side by side, neither dominating, each revealing the other.  
Structure and gesture, clarity and disruption, unfold together, allowing contrast to remain active rather than resolved.



**11. Color Contrast**

April 2026  
Acrylic on Canvas  
30 x 30 x 2 in

\$2,200



**12. The Point Of Connection**

April 2026  
Acrylic on Canvas  
30 x 30 x 2 in

\$2,200

**DESCRIPTION:**

Contrast converges at a single moment of contact - where separation gives way to relationship. Form, color, and space meet and define one another, revealing that connection is shaped through difference, not sameness.



**13. Taming The Chaos**

January 2026  
Acrylic on canvas  
48 x 24 x 2 in

\$2,800

**DESCRIPTION:**

Energy is gathered, not suppressed. Structure emerges without losing the vitality beneath. Taming The Chaos explores the balance between instinct and intention, where movement is shaped but never contained.



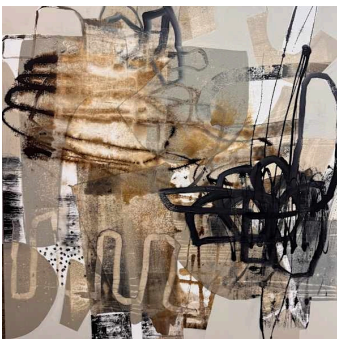
**14. What Sets the Stage 1-4 Mini Series**

April 2026  
Acrylic on canvas  
18 x 18 x 1.25 in

\$3,200

**DESCRIPTION:**

An exploration of structure as a starting point. Bold shapes and considered placement establish contrast early, creating a framework from which the rest of the composition can unfold.



**15. Clearing The Wild**

March 2026  
Acrylic on Canvas  
48 x 48 x 2 in

\$5,000

**DESCRIPTION:**

A dialogue between instinct and structure. Gestural force meets quieter ground, where contrast creates a space for something untamed to take form



## 16. I See You In The Noise

April 2026  
Acrylic on Canvas  
36 x 36 x 2 in

\$3,500

### DESCRIPTION:

Softness meets interruption, clarity emerges through disruption. I See You In The Noise explores how contrast reveals what might otherwise be lost, allowing something subtle to be seen within the surrounding chaos.



## 17. I Hear You In The Noise

April 2026  
Acrylic on Canvas  
36 x 36 x 2 in

\$3,500

### DESCRIPTION:

Softness meets interruption, clarity emerges through disruption. I Hear You In The Noise explores how contrast reveals what might otherwise be lost, allowing something subtle to be heard within the surrounding chaos.



## 18. Shifting Softly

2026  
Acrylic on canvas  
48 x 20 x 1.5 in

\$1,850

### DESCRIPTION:

Subtle transitions between form and space. Contrast unfolds gently through tonal shifts and quiet movement, where change is sensed rather than seen.



## 19. Gently Shifting

March 2026  
Acrylic on Canvas  
16 x 16 in

\$1,800

### DESCRIPTION:

Subtle changes move across the surface, where form, color, and space evolve without urgency. Gently Shifting holds a quiet transition, where nothing is fixed and everything is in motion.



## 20. Echoed Whisper

2026  
Acrylic on canvas  
48 x 20 x 1.5 in

\$1,800

### DESCRIPTION:

A quiet interplay of presence and absence. Soft layers and subtle shifts create contrast that lingers, where marks feel remembered as much as they are seen.



## In Contrast 1-50

April 2026  
Acrylic On watercolor board  
8 x 8 x 1 in

\$200 each

### DESCRIPTION:

A series of small works exploring contrast through repetition and variation. Each panel investigates a different relationship between light and dark, order and disruption, density and space, revealing how meaning is shaped through difference. Seen together, they form a larger conversation where no single solution holds, only an ongoing exploration.